

MAX cellular router

PEPWAVE
Broadband Possibilities

Load Balancing. Unbreakable VPN. Bandwidth Bonding.



MAX BR1 IP55

MAX HD2 IP67

MAX 700

All Weather Enclosure

Indoor to Outdoor IP67 Standard

SpeedFusion™

Bonding Technology

Unbreakable VPN

Fleet Tracking & Management

Powered by InControl 2

InControl²

Setup. Manage. Report.

InControl 2 Cloud Management

Works With



And worldwide 4G LTE/3G carriers

The Pepwave MAX cellular router is the ultimate in mobile connectivity. Able to combine up to seven wireless connections into a turbocharged datapipe using SpeedFusion™ bonding, the MAX is more than fast: its unbreakable VPN provides continuous connectivity you can count on. Plus, you can add and remove connections on the fly, so the MAX is easily scalable, too. And speaking of easy, our intuitive cloud management with GPS makes anytime, anywhere administration a snap, giving you a low-hassle, high-performance solution that brings wired reliability to environments where no other solution can.

SpeedFusion™-powered Dependability and Performance.

Designed to intelligently manage multiple Internet links, SpeedFusion technology continuously monitors all connections and switches between them as needed to create unbreakable VPN connections. In addition, SpeedFusion bonds all available bandwidth for uninterrupted and ultra-fast performance under even the heaviest loads, such as real-time POS, video, VoIP, and other data-intensive networking.

Cloud Management with GPS Fleet Tracking.

Administering your mobile network and keeping tabs on connected devices has never been easier and more intuitive, thanks to our cloud management platform and built-in GPS tracking.

Unparalleled Modem Support.

The MAX includes integrated 4G LTE or world-mode 3G modems, and it works flawlessly with 200+ USB cellular modems from carriers worldwide.

Durable Enclosures.

Available in a variety of tough cases, the Pepwave MAX is engineered for worry-free performance in even the harshest conditions.

Plug and Play Simplicity.

The MAX makes advanced, high-speed mobile networking super simple: just plug in cellular connections as needed and go. When you don't need as much speed, unplug connections and get great performance while cutting your wireless bill. Sounds easy? It is. Try it out on our demo page: peplink.com/demo/max/

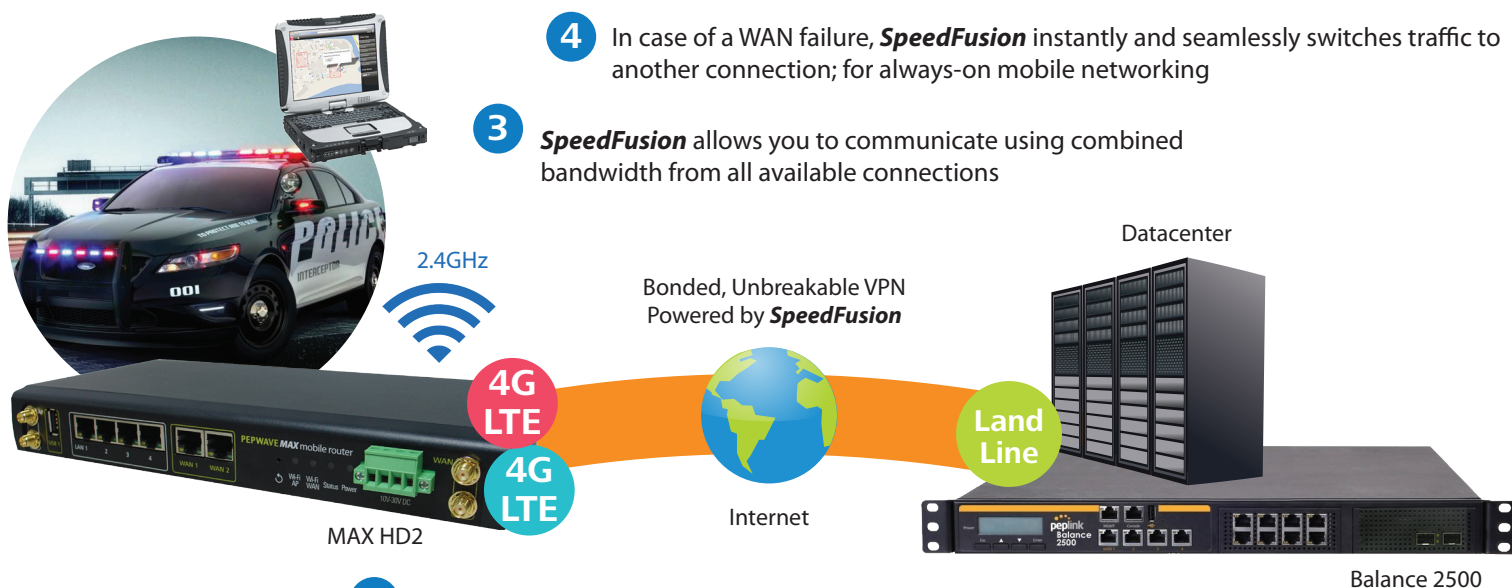
Applications

Public Safety – 24/7 Unbreakable CCTV and Radio over IP

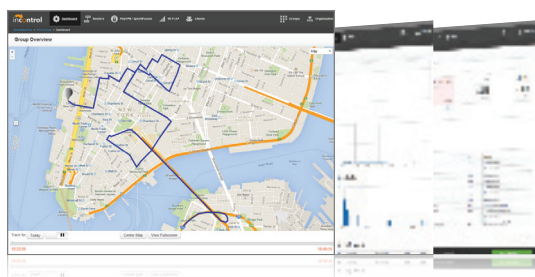
- 2 Unbreakable VPN powers uninterrupted communication and resource access

- 4 In case of a WAN failure, **SpeedFusion** instantly and seamlessly switches traffic to another connection; for always-on mobile networking

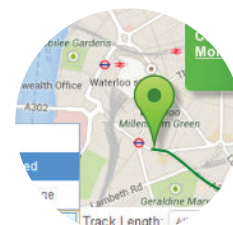
- 3 **SpeedFusion** allows you to communicate using combined bandwidth from all available connections



- 1 **SpeedFusion** creates an **unbreakable, high-bandwidth connection** using multiple 4G LTE/3G modems from different carriers



InControl²
Setup. Manage. Report.



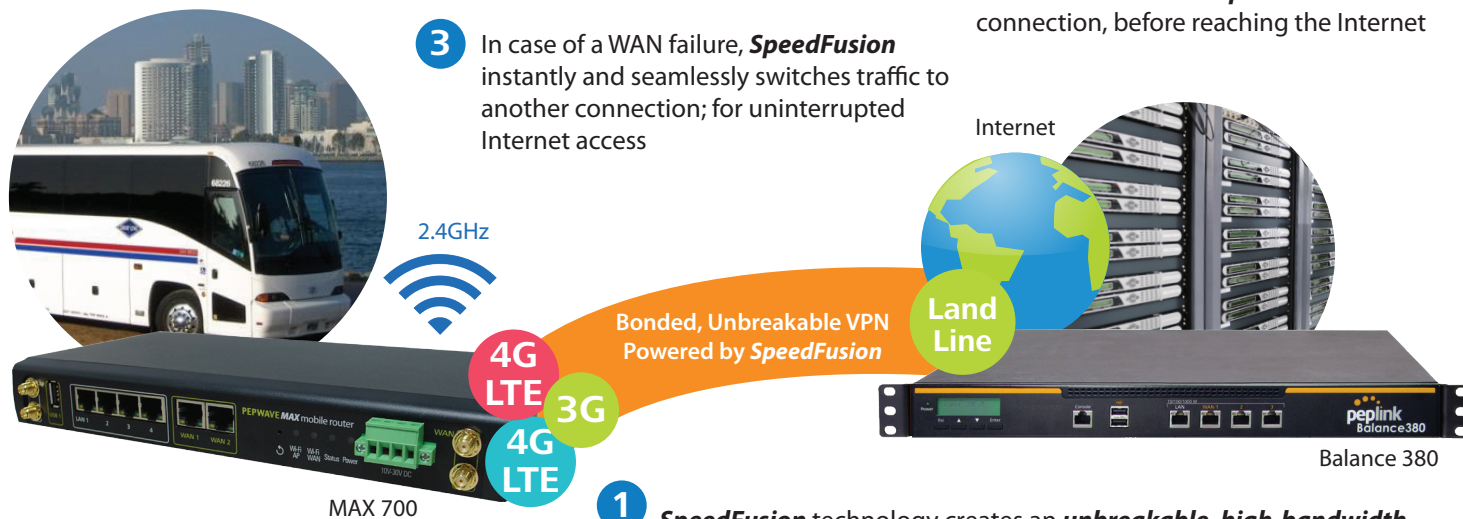
- 5 InControl 2 provides complete cloud-based device management, monitoring, and reporting and let you check vehicle speed, view cellular coverage, and play back route histories in real-time

Transportation – Fast and Reliable Internet On-The-Go

- 2 Passengers get reliable and fast Internet access

- 3 In case of a WAN failure, **SpeedFusion** instantly and seamlessly switches traffic to another connection; for uninterrupted Internet access

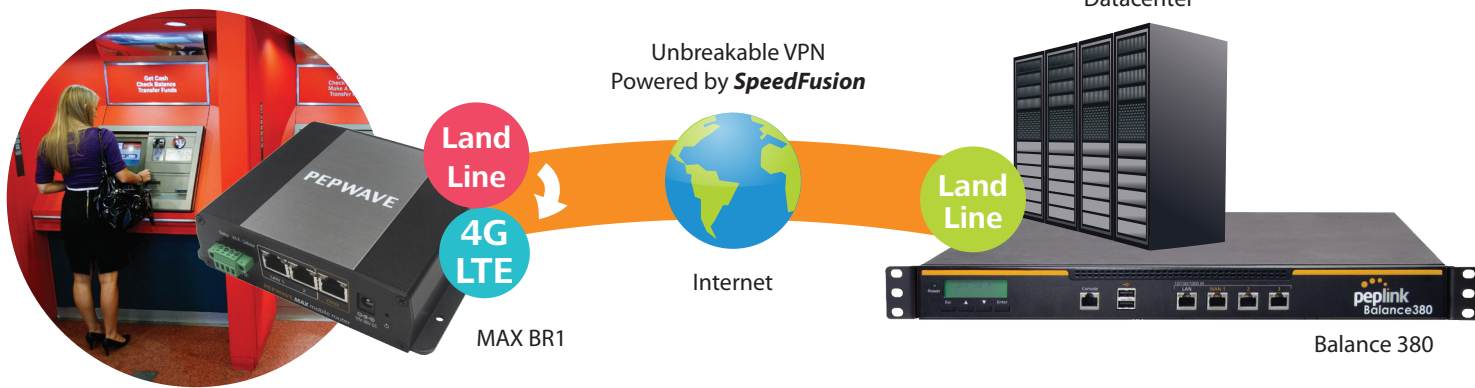
- 4 Traffic reaches your Peplink Balance over a fast and unbreakable **SpeedFusion** connection, before reaching the Internet



- 1 **SpeedFusion** technology creates an **unbreakable, high-bandwidth connection** using multiple USB 4G LTE/3G modems from different carriers

ATMs – Unbreakable VPN for M2M Communication

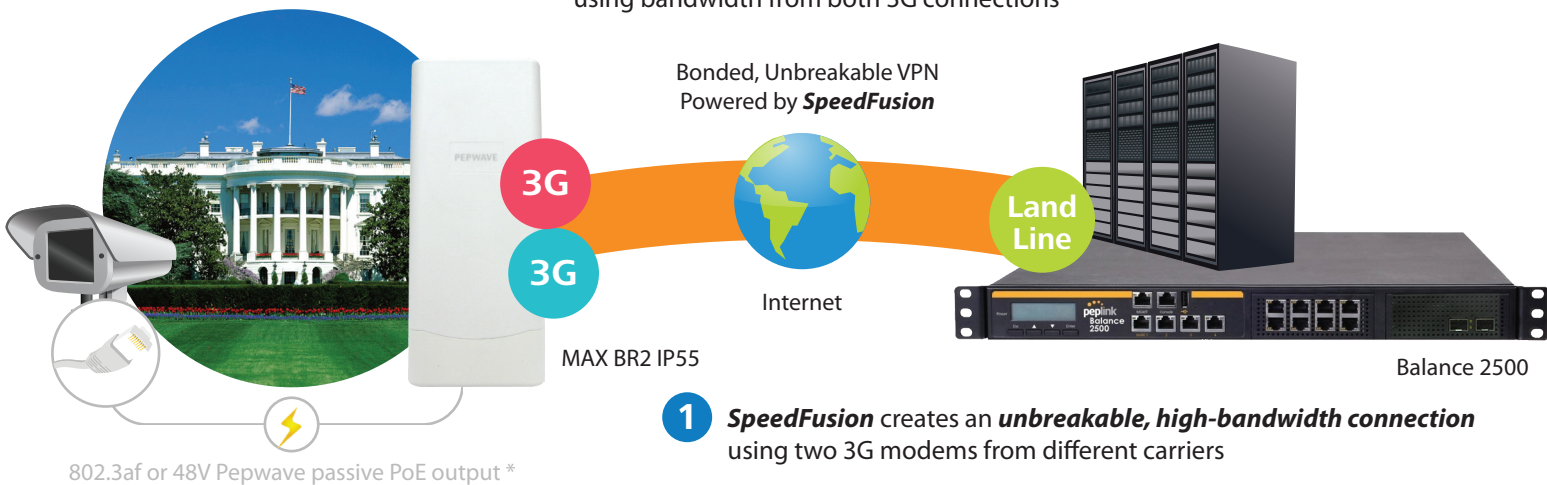
- 2 Unbreakable VPN delivers ultra-reliable and secure ATM transactions
- 3 In case of a WAN failure, **SpeedFusion** instantly and seamlessly switches traffic to another connection; for continuous data sessions



- 1 **SpeedFusion** creates an **unbreakable, high-bandwidth connection** to the datacenter

Video Surveillance – 24/7 Unbreakable CCTV

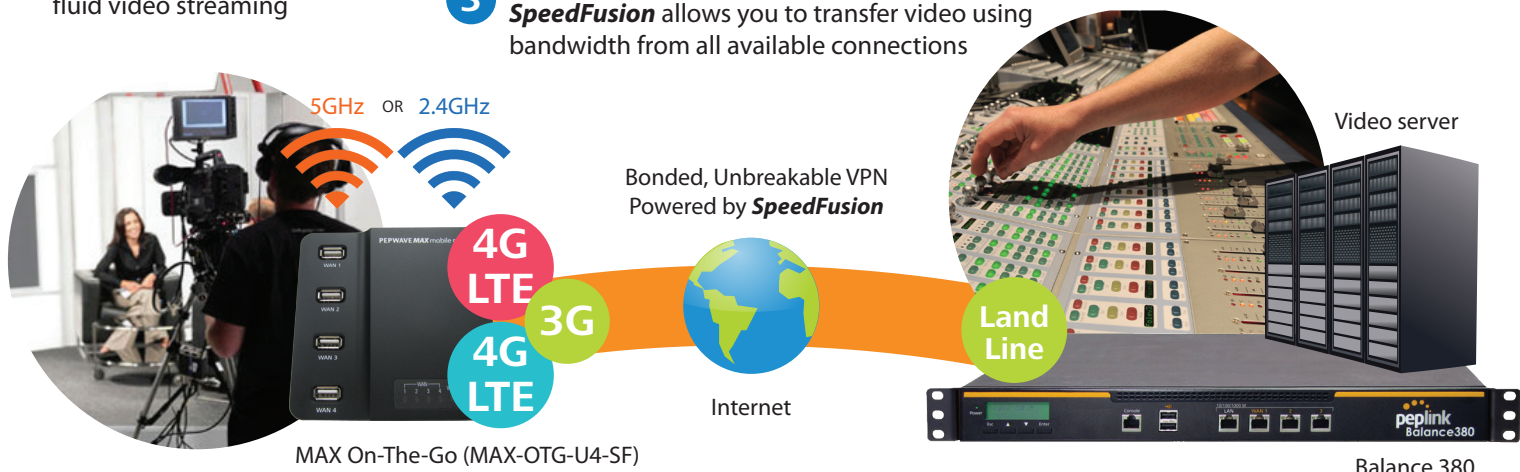
- 3 Unbreakable VPN ensures constant video surveillance
- 4 **SpeedFusion** enables high definition video surveillance using bandwidth from both 3G connections
- 5 If one 3G link fails, **SpeedFusion** instantly and seamlessly switches traffic to another connection; for uninterrupted video surveillance



- 2 The MAX BR2 IP55 powers an IP camera with 802.3af/48V Pepwave passive PoE

Broadcasting and Media – Blazing Fast Video Broadcast on Multiple 4G LTE/3G Links

- 2 Unbreakable VPN delivers fast and fluid video streaming
- 3 **SpeedFusion** allows you to transfer video using bandwidth from all available connections
- 4 In case of a WAN failure, **SpeedFusion** instantly and seamlessly switches traffic to another connection; for ultra-reliable video streaming



- 1 **SpeedFusion** creates an **unbreakable, high-bandwidth connection** using multiple USB 4G LTE/3G modems from different carriers

Specifications	All-Purpose with Multiple USB Ports		Business Rugged with Embedded Modem			Heavy Duty, Mission Critical Bandwidth Bonding			
	MAX On-The-Go MAX-OTG-U4-SF	MAX 700 MAS-GN2-R	MAX BR1 MAX-BR1-*	MAX BR1 IP55 MAX-BR1-*-IP55	MAX BR2 IP55 MAX-BR2-*-IP55	MAX HD2 MAX-HD2-*	MAX HD2 IP67 MAX-HD2-*-IP67	MAX HD2 mini MAX-HD2-mini-*	MAX HD4 MAX-HD4-*
Cellular WAN									
Embedded 4G LTE/3G	○	○	1	1	2 [^]	2	2	2	4
Redundant SIM Slots	○	○	●	●	○	○	●	●	●
USB 4G LTE/3G WAN	4	4	○	○	○	1	○	1	1
WAN									
Ethernet WAN Ports	1	2	1 ⁶	1 ⁶	1 ⁶	2	1	1	2
802.11b/g/n Wi-Fi as WAN	● ⁺	●	●	●	●	●	○ ⁺	○	●
802.11a/n Wi-Fi as WAN	● ⁺	○	○	○	○	○	○ ⁺	○	●
LAN									
Ethernet LAN Ports	1	4(GbE)	2	2	2	4(GbE)	1(GbE)	2(GbE)	8(GbE)
802.11b/g/n Wi-Fi AP	● ⁺	●	●	●	●	●	●	○	●
802.11a/n Wi-Fi AP	● ⁺	○	○	○	○	○	○	○	●
Capacity									
Router Throughput	100Mbps		100Mbps			100Mbps		200Mbps	300Mbps
VPN Functionality									
PepVPN	●	●	●	●	●	●	●	●	●
SpeedFusion Hot Failover	●	●	●	●	●	●	●	●	●
SpeedFusion Bandwidth Bonding	●	●	○	○	●	●	●	●	●
PepVPN/SpeedFusion Peers	2		2			2			
PepVPN/SpeedFusion Throughput (No Encryption)	40Mbps	60Mbps	40Mbps			60Mbps		100Mbps	150Mbps
PepVPN/SpeedFusion Throughput (256-bit AES)	20Mbps	30Mbps	20Mbps			30Mbps		60Mbps	120Mbps
Central Management									
InControl Cloud Management	●	●	●	●	●	●	●	●	●
GPS Fleet Management	○	○	●	○	○	●	○	●	●
AP Controller									
InControl Cloud Management	○	●	○	○	○	●	●	●	●
Max. No. of AP Supported	○	10	○	○	○	10	10	10	10
Hardware Features									
Enclosure	Low-Profile, All-Purpose	Indoor Metal	Compact, Indoor Metal	Outdoor IP55 All-Weather		Indoor Metal	Outdoor IP67 All-Metal	Indoor Metal	Indoor Metal
Dimensions	Inches: 1.2 x 4.3 x 4.3 Millimeters: 30 x 110 x 110	Inches: 1.6 x 10.2 x 5.7 Millimeters: 39.5 x 260 x 143	Inches: 1.6 x 5.8 x 5.0 Millimeters: 40 x 147 x 128	Inches: 11.8 x 4.9 x 1.9 Millimeters: 300 x 124 x 47		Inches: 1.6 x 10.2 x 5.7 Millimeters: 39.5 x 260 x 143	Inches: 9.0 x 12.2 x 2.6 Millimeters: 230 x 310 x 66	Inches: 1.6 x 5.8 x 5.0 Millimeters: 40 x 147 x 128	Inches: 1.9 x 6.9 x 11.5 Millimeters: 50 x 177 x 292
Weight	0.43 pounds 195 grams	2.65 pounds 1.2 kg	0.96 pounds 435 grams	1.15 pounds 520 grams		2.65 pounds 1.2 kg	5.84 pounds 2.65 kg	0.96 pounds 435 grams	4.20 pounds 1.9 kg
Power Input	Device: 10V–24V DC,2A AC Adapter: AC Input 100V–240V/ DC Output 12V,2A	Device: 10V–30V DC,3A AC Adapter: AC Input 100V–240V/ DC Output 12V Terminal Block: 10V–30V DC,3A	Device: 10V–30V DC,2A AC Adapter: AC Input 100V–240V/ DC Output 12V Terminal Block: 10V–30V DC,2A	Pepwave Passive PoE: 12V–48V DC,2A(48V Pepwave Passive PoE Input is Needed for 802.3af or Pepwave Passive PoE Output)*		Device: 10V–30V DC,3A AC Adapter: AC Input 100V–240V/ DC Output 12V Terminal Block: 10V–30V DC,3A	Device: 10V–30V DC, 3A	Device: 12V – 48V DC AC Adapter: AC Input 100V – 240V DC Output 12V or 48V Terminal Block: 12V – 48V DC*	Device: 12V – 48V DC AC Adapter: AC Input 100V – 240V DC Output 12V*
Power Consumption	9W (w/o modems) 20W (max.)	28W (max.)	16W (max.)			25W (max.)		15W (max.)	38W (max.)
Operating Temperature	-14° – 149°F -10° – 65°C	-40° – 149°F -40° – 65°C	-40° – 149°F -40° – 65°C			-40° – 149°F -40° – 65°C			
Humidity	15% – 95% (non-condensing)								

[^] MAX BR2 IP55 supports two embedded 3G modems only. ⁶ Convertible into LAN port. ⁺ Support only one of 802.11b/g/n and 802.11a/n Wi-Fi at a time. * PoE kit is available separately.

Features

WAN
Support for PPPoE, Static IP, DHCP
WAN Link Health Check
Bandwidth Allowance Monitor
USB 4G/3G Modem Support*
IPv6 Support*
Support for Dynamic DNS services
WAN Port Convertible into LAN Port*

LAN
DHCP Server for LAN Clients
Extended DHCP Options
DHCP Reservation
DNS Proxy for LAN Clients
VLAN on LAN Support

Load Balancing*
Intelligent Failover
Session Persistence
Per-Service Load Distribution
Multiple Algorithms*

Complete VPN Solution
PepVPN/SpeedFusion Hot Failover/
SpeedFusion Bandwidth Bonding*
Site-to-Site VPN
Bandwidth Aggregation*
Hot Failover*
256-bit AES Encryption
Pre-shared Key Authentication
Dynamic Routing, PPTP VPN, an IPsec VPN
(Network-to-Network) with X.509
Certificate Support*

Advanced QoS
User Groups
Bandwidth Reservation*
Individual Bandwidth Limit*
Application Prioritization
By User Groups*
SIP, HTTPS, VPN QoS
Custom Application QoS

AP Controller*
AP Controller
Wi-Fi Usage Statistics

Captive Portal Support*
Support for Wired and Wireless LAN Clients
Supports RADIUS and LDAP* Authentication
Time and Usage Quotas on Open Access Mode
Built-in Customizable Splash Page

Networking
NAT and IP Forwarding
Static Routes
Port Forwarding
Many to One, One to One NAT
NAT Pool
SIP ALG, H.323 ALG
UPnP, NAT-PMP
WINS Server
VRRP HA support*

Security
Stateful Firewall
DoS Prevention
Web Blocking

Device Management
Web Admin. and Command Line Interface
InControl Cloud Management
Email Notification
Active Client & Session Lists
Bandwidth Usage Statistics
Syslog Service
SNMP v1, v2c and v3

Certification
FCC, CE, RoHS
Shock and Vibration Resistance*
RF Port Lighting Immunity*
E-Mark*
EN 50155: Railway Applications*
EN 61000: Electromagnetic Compatibility*

* Specifications vary across different MAX models. For the most updated specifications, please refer to our website: peplink.com/products/max-cellular-router